

# GELKOH GMBH

## Battery handling made safe

**Hazardous goods packaging  
&  
hazard prevention systems  
for Lithium batteries**



# Safety for handling Lithium batteries

GelKoh GmbH is your expert partner for the safe transport, proper storage, and professional handling of lithium batteries.

Since our founding in 2013, we have established ourselves as a leading international provider and offer customized solutions for your safety requirements.

We place particular emphasis on environmentally friendly fire protection concepts and the highest quality standards to ensure the protection of people and the environment.

GelKoh GmbH is a BAM-certified manufacturer of hazardous goods packaging.



# TRANSPORT

## Dangerous goods regulations

for Lithium batteries according to ADR

SV = Special Provision

P = Packaging instructions for 4A coded packaging

LP = Packaging instructions for 50A coded packaging

Prototype SV310	Defect SV376		End of life SV377		
	critical?				
	No P908 LP904	Yes P911 LP906			
P910 LP905			P909 LP903		
✓	✓	✓	✓	LiBa®Box XS - Max	Pages 4 + 5
✓	✓		✓	LiBa®Barrel 6L - 212L	Page 8
✓	✓		✓	LiBa®Pac S - X	Page 9
✓	✓		✓	LiBa®Pac M	Page 9

# TRANSPORT

## LiBa® Box

An innovative box with a drip tray, fire detection, and an extinguishing system that both extinguishes the fire and simultaneously handles the exhaust gas treatment of the bursting batteries.

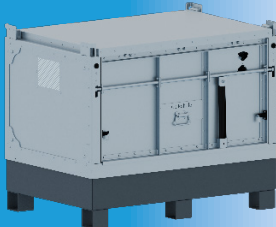
Combined with the appropriate inner packaging, you receive a **modular complete solution** for the storage and transport of lithium batteries.

### LiBa® Box XS



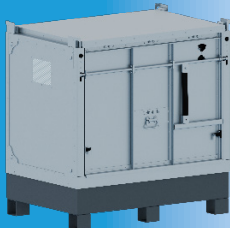
outer L x W x H: 900 x 650 x 555	inner L x W x H: 740 x 500 x 220
net weight: 89 kg	max. gross weight: 183 kg
UN-Code: 4A/X	usable with SV310, SV376, SV377, P911
extinguishing solution: LiBa®Sol	self activates at ca. 180 °C
steel construction	LiBa®Vent Gasmanagement
stackable	craneable

### LiBa® Box M



outer L x W x H: 1200 x 839 x 990	inner L x W x H: 1050 x 660 x 500
net weight: 176 kg	max. gross weight: 590 kg
UN-Code: 4A/X & 50A/X	usable with SV310, SV376, SV377, LP903, LP904, LP905, LP906
extinguishing solution: LiBa®Sol	self activates at ca. 180 °C
Stahlkonstruktion	LiBa®Vent Gasmanagement
stackable	craneable

### LiBa® Box L



outer L x W x H: 1200 x 839 x 1250	inner L x M x H: 1050 x 660 x 760
net weight: 189 kg	max. gross weight: 590 kg
UN-Code: 4A/X & 50A/X	usable with SV310, SV376, SV377, LP903, LP904, LP905, LP906
extinguishing solution: LiBa®Sol	self activates at ca. 180 °C
steel construction	LiBa®Vent Gasmanagement
stackable	craneable

### LiBa® Box XL



outer L x B x H: 1200 x 1200 x 1801	inner L x B x H: 1050 x 1060 x 1380
net weight: 352 kg	max. gross weight: 1770 kg
UN-Code: 50A/X	usable with SV310, SV376, SV377, LP903, LP904, LP905, LP906
extinguishing solution: LiBa®Sol	self activates at ca. 180 °C
steel construction	LiBa®Vent Gasmanagement
stackable	craneable

### LiBa® Box XLj



outer L x W x H: 1500 x 1500 x 1650	inner L x W x H: 1400 x 1300 x 1000
net weight: 431 kg	max. gross weight: 3400 kg
UN-Code: 4A/Y & 50A/X	usable with SV310, SV376, SV377, LP903, LP904, LP905, LP906
extinguishing solution: LiBa®Sol	self activates at ca. 180 °C
steel construction	LiBa®Vent Gasmanagement
stackable	craneable

# TRANSPORT

**LiBa®Box XLs**



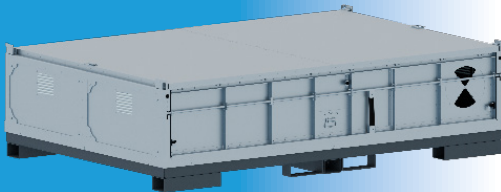
outer L x W x H: 2000 x 1439 x 991	inner L x W x H: 1850 x 1200 x 500
net weight: 428 kg	max. gross weight: 1850 kg
UN-Code: 50A/X	usable with SV310, SV376, SV377, LP903, LP904, LP905, LP906
extinguishing solution: LiBa®Sol	self activates at ca. 180 °C
steel construction	LiBa®Vent Gasmanagement
stackable	craneable

**LiBa®Box XLf**



outer L x W x H: 1780 x 980 x 945	inner L x W x H: 1625 x 830 x 620
net weight: 336,2 kg	max. gross weight: 975 kg
UN-Code: 50A/X	usable with SV310, SV376, SV377, LP903, LP904, LP905, LP906
extinguishing solution: LiBa®Sol	self activates at ca. 180 °C
steel construction	LiBa®Vent Gasmanagement
stackable	craneable

**LiBa®Box XL+**



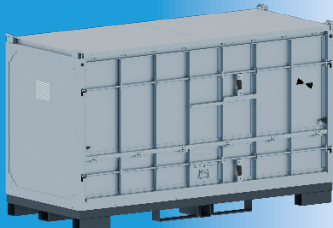
outer L x W x H: 3000 x 2000 x 830	inner L x W x H: 2800 x 1900 x 490
net weight: 920 kg	max. gross weight: 2320 kg
UN-Code: 50A/X	usable with SV310, SV376, SV377, LP903, LP904, LP905, LP906
extinguishing solution: LiBa®Sol	self activates at ca. 180 °C
steel construction	LiBa®Vent Gasmanagement
stackable	craneable

**LiBa®Box XLg**



outer L x W x H: 3000 x 2000 x 1330	inner L x W x H: 2850 x 1800 x 1000
net weight: 1120 kg	max. gross weight: 4120 kg
UN-Code: 50A/X	usable with SV310, SV376, SV377, LP903, LP904, LP905, LP906
extinguishing solution: LiBa®Sol	self activates at ca. 180 °C
steel construction	LiBa®Vent Gasmanagement
stackable	craneable

**LiBa®Box XLd**



outer L x W x H: 2520 x 1050 x 1486	inner L x W x H: 2360 x 870 x 1160
net weight: 540 kg	max. gross weight: 2540 kg
UN-Code: 50A/X	usable with SV310, SV376, SV377, LP903, LP904, LP905, LP906
extinguishing solution: LiBa®Sol	self activates at ca. 180 °C
steel construction	LiBa®Vent Gasmanagement
stackable	craneable

**LiBa®Box XL Max**



outer L x W x H: 3500 x 2400 x 1530	inner L x W x H: 3250 x 2180 x 1200
net weight: 1486 kg	max. gross weight: 6136 kg
UN-Code: 50A/X	usable with SV310, SV376, SV377, LP903, LP904, LP905, LP906
extinguishing solution: LiBa®Sol	self activates at ca. 180 °C
steel construction	LiBa®Vent Gasmanagement
stackable	craneable

# TRANSPORT & QUARANTINE

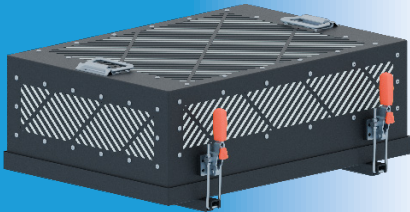
## LiBa®Safe inner packaging in accordance with ADR

For lithium batteries weighing **up to 4.5 tons**.

Thanks to its design and the numerous **real-life fire tests** it has undergone to date, our **LiBa®Safe** is suitable as inner packaging for our **LiBa®Box** for **ADR transport**.

Similarly, the **LiBa®Safe** with its accessories, plug-in rollers, and rain cover is the **perfect quarantine solution for operational fire protection**.

LiBa®Safe XS



outer L x W x H: 650 x 550 x 262	inner L x W x H: 610 x 410 x 195
net weight: 28 kg	
extinguishing solution: LiBa®Sol	self activates at ca. 180 ° C
steel construction	LiBa®Vent Gasmanagement

LiBa®Safe M



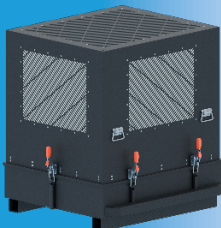
outer L x W x H: 1020 x 773 x 500	inner L x W x H: 900 x 655 x 400
net weight: 70 kg	
extinguishing solution: LiBa®Sol	self activates at ca. 180 ° C
steel construction	LiBa®Vent Gasmanagement

LiBa®Safe L



outer L x W x H: 1025 x 715 x 755	inner L x W x H: 885 x 585 x 615
net weight: 76 kg	
extinguishing solution: LiBa®Sol	self activates at ca. 180 ° C
steel construction	LiBa®Vent Gasmanagement

LiBa®Safe XL



outer L x W x H: 1000 x 1110 x 1150	inner L x W x H: 795 x 890 x 1000
net weight: 148 kg	
extinguishing solution: LiBa®Sol	self activates at ca. 180 ° C
steel construction	LiBa®Vent Gasmanagement

LiBa®Safe XLj



outer L x W x H: 1295 x 1460 x 1000	inner L x W x H: 1055 x 1315 x 850
net weight: 215 kg	
extinguishing solution: LiBa®Sol	self activates at ca. 180 ° C
steel construction	LiBa®Vent Gasmanagement

**LiBa®Safe XLs**

outer L x W x H: 1825 x 1250 x 560

inner L x W x H: 1680 x 1055 x 455

net weight: 198 kg

extinguishing solution: LiBa®Sol

self activates at ca. 180 ° C

steel construction

LiBa®Vent Gasmanagement

**LiBa®Safe XLf**

outer L x W x H: 1545 x 870 x 550

inner L x W x H: 1410 x 650 x 365

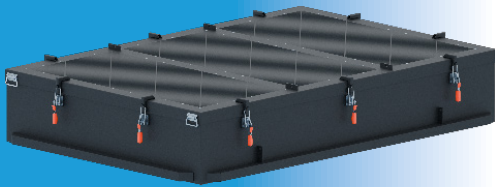
net weight: 146 kg

extinguishing solution: LiBa®Sol

self activates at ca. 180 ° C

steel construction

LiBa®Vent Gasmanagement

**LiBa®Safe XL+**

outer L x W x H: 2660 x 1835 x 485

inner L x W x H: 2495 x 1595 x 425

net weight: 380 kg

extinguishing solution: LiBa®Sol

self activates at ca. 180 ° C

steel construction

LiBa®Vent Gasmanagement

**LiBa®Safe XLg**

outer L x W x H: 2646 x 1398 x 975

inner L x W x H: 2466 x 1228 x 915

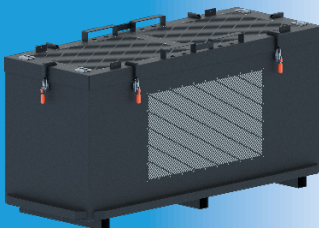
net weight: 420 kg

extinguishing solution: LiBa®Sol

self activates at ca. 180 ° C

steel construction

LiBa®Vent Gasmanagement

**LiBa®Safe XLd**

outer L x W x H: 2300 x 930 x 1155

inner L x W x H: 2050 x 680 x 980

net weight: 290 kg

extinguishing solution: LiBa®Sol

self activates at ca. 180 ° C

steel construction

LiBa®Vent Gasmanagement

**LiBa®Safe XL MAX**

outer L x W x H: custom

inner L x W x H: custom

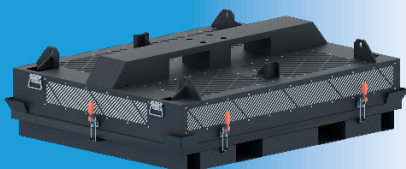
net weight: custom

extinguishing solution: LiBa®Sol

self activates at ca. 180 ° C

steel construction

LiBa®Vent Gasmanagement

**LiBa®Safe Custom Solutions**

individual customization

extinguishing solution: LiBa®Sol

self activates at ca. 180 ° C

steel construction

LiBa®Vent Gasmanagement

# TRANSPORT

## LiBa® Barrel

Our **LiBa® Barrel** is a safe solution for collecting, storing, and transporting defective lithium batteries **in accordance with SV 377 ADR.**

The barrels are available with capacities of **6L, 30L, 50L, and 212L**, are nestable (except for 212L), and can be closed using a clamping ring and safety lock.

The lids are equipped with our **LiBa®Vent pressure relief system.**

### LiBa® Barrel 6L



dimensions (ca.): height: 180 - nominal diameter: 230 - bottom fold: 223	
net weight: 1,85 kg	max. gross weight: 15 kg
UN-Codierung: 1A2/X15	usable with SV310, SV376, SV377
inner packaging: LiBa®Glas or Vermiculite, plastic bags	
steel barrel (0,5mm sheet metal)	LiBa®Vent Gasmanagement
stackable	

### LiBa® Barrel 30L



dimensions (ca.): height: 396 - nominal diameter: 328 - bottom fold: 316	
net weight: 2,31 kg	max. gross weight: 40 kg
UN-Codierung: 1A2/X40	usable with SV310, SV376, SV377
inner packaging: LiBa®Glas or Vermiculite, plastic bags	
steel barrel (0,5mm sheet metal)	LiBa®Vent Gasmanagement
stackable	

### LiBa® Barrel 50L



dimensions (ca.): height: 515 - nominal diameter: 375 - bottom fold: 360	
net weight: 4,41 kg	max. gross weight: 55 kg
UN-Codierung: 1A2/X55	usable with SV310, SV376, SV377
inner packaging: LiBa®Glas or Vermiculite, plastic bags	
steel barrel (0,5mm sheet metal)	LiBa®Vent Gasmanagement
stackable	

### LiBa® Barrel 212L



dimensions (ca.): height: 874 - nominal diameter: 605 - bottom fold: 583	
net weight: 22 kg	max. gross weight: 142 kg
UN-Codierung: 1A2/X142	usable with SV310, SV376, SV377
inner packaging: LiBa®Glas or Vermiculite, plastic bags	
steel barrel (0,5mm sheet metal)	LiBa®Vent Gasmanagement
stackable	

# TRANSPORT

## LiBa®Pac

With the **LiBa®Pac**, in conjunction with the **LiBa®Bag**, we offer two-stage packaging for lithium batteries up to 40 kg in accordance with **SV 376** and **SV 377 ADR**, as well as for shipping prototypes in accordance with **SV 310 ADR**.

The reusable box **meets the highest protection requirements** in accordance with packaging group I (X coding) and prevents the spread of fire, even in the event of batteries undergoing a complete reaction. The **LiBa®Pac** is always delivered with the matching **LiBa®Bag**.

### LiBa®Pac S



outer L x W x H: 478 x 219 x 200 mm	inner L x W x H: 450 x 190 x 160 mm
net weight: 10 kg	max. gross weight: 20,3 kg
up to 4,5 kWh	usable for transport and storage
UN-Codierung: 4A	uses LiBa®Bag as inner packaging
steel construction	

### LiBa®Pac L



outer L x W x H: 380 x 282 x 200 mm	inner L x W x H: 340 x 250 x 160 mm
net weight: 10 kg	max. gross weight: 17 kg
up to 4,5 kWh	usable for transport and storage
UN-Codierung: 4A	uses LiBa®Bag as inner packaging
steel construction	

### LiBa®Pac X



outer L x W x H: 510 x 260 x 227 mm	inner L x W x H: 480 x 230 x 170 mm
net weight: 12 kg	max. gross weight: 52 kg
up to 4,5 kWh	usable for transport and storage
UN-Codierung: 4A	uses LiBa®Bag as inner packaging
steel construction	

### LiBa®Pac M



outer L x W x H: 460 x 500 x 462	inner L x W x H: 355 x 400 x 330
net weight: 26 kg	max. gross weight: 66 kg
up to 4,5 kWh	usable for transport and storage
UN-Codierung: 4A	uses LiBa®Bag as inner packaging
steel construction	

# STORAGE

## LiBa®Con Security Container

A tried-and-tested, cost-effective, **mobile outdoor storage** for hazardous materials. When empty, it can be moved at any time using a forklift truck or crane. Our **LiBa®Con** safety containers can be **equipped according to your requirements**, for example with air conditioning or shelving, and include our **special gas management and extinguishing system**. This allows the safety container to be **optimally adapted** to the specific requirements of the operator.

LiBa®Con 10'



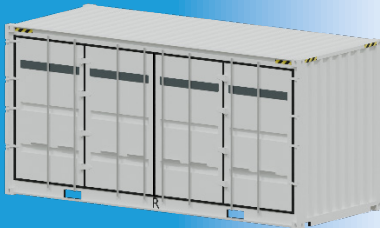
outer L x W x H: 2998 x 2435 x 2898	inner L x W x H: 2700 x 2250 x 2350
net weight: ca. 3,5 t	cable opening
drip tray in accordance with StaWaR	craneable
extinguishing solution: LiBa®Sol	activated via smoke detector
steel construction	LiBa®Vent Gasmanagement
optional accessories: LED-lamps, doors, shelves, special coating, air conditioning, isolation	

LiBa®Con 20'



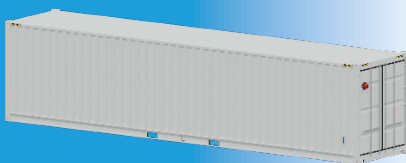
outer L x W x H: 6058 x 2438 x 2896	inner L x W x H: 5900 x 2100 x 2150
net weight: ca. 4,2 t	cable opening
drip tray in accordance with StaWaR	craneable
extinguishing solution: LiBa®Sol	activated via smoke detector
steel construction	LiBa®Vent Gasmanagement
optional accessories: LED-lamps, doors, shelves, special coating, air conditioning, isolation	

LiBa®Con 20' OS



outer L x W x H: 6058 x 2438 x 2896	inner L x W x H: 5900 x 2100 x 2150
net weight: ca. 5 t	cable opening
drip tray in accordance with StaWaR	craneable
extinguishing solution: LiBa®Sol	activated via smoke detector
steel construction	LiBa®Vent Gasmanagement
optional accessories: LED-lamps, doors, shelves, special coating, air conditioning, isolation	

LiBa®Con 40'



outer L x W x H: 12192 x 2438 x 2896	inner L x W x H: 11850 x 2250 x 2290
net weight: ca. 7,8 t	cable opening
drip tray in accordance with StaWaR	craneable
extinguishing solution: LiBa®Sol	activated via smoke detector
steel construction	LiBa®Vent Gasmanagement
optional accessories: LED-lamps, doors, shelves, special coating, air conditioning, isolation	

LiBa®Con 40' OS

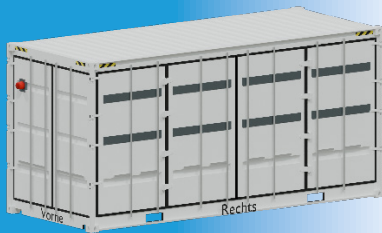


outer L x W x H: 12192 x 2438 x 2896	inner L x W x H: 12032 x 2352 x 2698
net weight: ca. 8 t	cable opening
drip tray in accordance with StaWaR	craneable
extinguishing solution: LiBa®Sol	activated via smoke detector
steel construction	LiBa®Vent Gasmanagement
optional accessories: LED-lamps, doors, shelves, special coating, air conditioning, isolation	

# STORAGE

**LiBa®Con** solutions comply with the latest requirements in accordance with **TRGS, AwSV, and ArbStV.**

**LiBa®Con 20' Double OS**



outer L x W x H: 6058 x 2438 x 2896	inner L x W x H: 5900 x 2100 x 2150
net weight: ca. 5,3 t	cable opening
drip tray in accordance with StaWaR	craneable
extinguishing solution: LiBa®Sol	activated via smoke detector
steel construction	LiBa®Vent Gasmanagement
optional accessories: LED-lamps, doors, shelves, special coating, air conditioning, isolation	

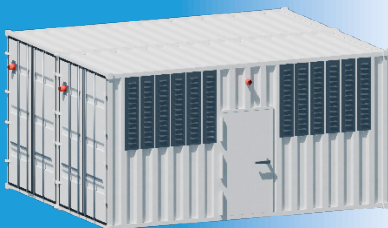
## LiBa®Con Custom Solutions

**LiBa®Con Cube**



outer L x W x H: 2998 x 2435 x 2898	inner L x W x H: 2700 x 2250 x 2350
net weight: ca. 3,5 t	cable opening
drip tray in accordance with StaWaR	craneable
extinguishing solution: LiBa®Sol	activated via smoke detector
steel construction	LiBa®Vent Gasmanagement
optional accessories: LED-lamps, doors, shelves, special coating, air conditioning, isolation	

**LiBa®Con TwinTwenty**



outer L x W x H: 5000 x 6000 x 2900	inner L x W x H: 4570 x 5600 x 2310
net weight: ca. 9 t	cable opening
drip tray in accordance with StaWaR	craneable
extinguishing solution: LiBa®Sol	activated via smoke detector
steel construction	LiBa®Vent Gasmanagement
optional accessories: LED-lamps, doors, shelves, special coating, air conditioning, isolation	

**LiBa®Con TwinTwenty V2**



outer L x W x H: 5000 x 6000 x 2900	inner L x W x H: 4570 x 5600 x 2310
net weight: ca. 9 t	cable opening
drip tray in accordance with StaWaR	craneable
extinguishing solution: LiBa®Sol	activated via smoke detector
steel construction	LiBa®Vent Gasmanagement
optional accessories: LED-lamps, doors, shelves, special coating, air conditioning, isolation	

## Didn't find what you were looking for?

**No problem!** We'll work with you to develop a customized solution that's precisely tailored to your needs.

**Contact us** – we'll find the optimal solution for your requirements.

# CUSTOM SOLUTIONS

## LiBa®Vault



**for storing small quantities of batteries. For use in bicycle shops, hardware stores, etc.**

outer L x W x H: 1200 x 800 x 1900	inner L x W x H: 1100 x 630 x 1600
net weight: 850 kg	max. gross weight: 600 kg
drip tray in accordance with StaWaR	viewport
extinguishing solution: LiBa®Sol	activates at ca. 72 ° C
steel construction	LiBa®Vent Gasmanagement
includes 3 shelves	additional shelves available on request

## LiBa®Safe Plus with Trolley



**for evacuating conspicuous batteries in production facilities and workshops**

custom dimensions	
self-locking closure	
gas spring	opens up to 90 °
extinguishing solution: LiBa®Sol	activates at ca. 180 ° C
steel construction	LiBa®Vent Gasmanagement
includes trolley	wheels can be steered and locked in place

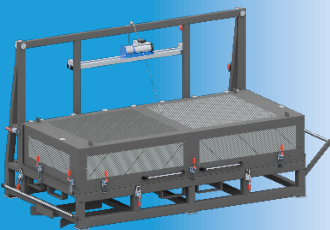
## LiBa®Safe Plus Inner Packaging



**for evacuating conspicuous batteries in production facilities and workshops**

custom dimensions	
self-locking closure	
gas spring	opens up to 90 °
extinguishing solution: LiBa®Sol	activates at ca. 180 ° C
steel construction	LiBa®Vent Gasmanagement
inner packaging in accordance with ADR	

## LiBa®Safe Plus Automatic



**for containment and evacuation of your systems in battery production**

custom dimensions	
self-locking closure	opens up to 90 °
electrical opening and closure	automatic closure in case of an emergency
extinguishing solution: LiBa®Sol	activation by smoke detector or manually
steel construction	LiBa®Vent Gasmanagement
inner packaging in accordance with ADR	connects to existing fire alarm control panel

## LiBa®Fence



**protection against the spread of bursting battery parts in production facilities and workshops**

dimensions L x H: 3350 x 1850
fire blanket / curtain
including eyelets at the hem
fence not included in delivery

## LiBa®Wall



**protection against the spread of bursting battery parts in production facilities and workshops**

dimensions L x W x H: 1070 x 505 x 2075
consists of 5 segments
includes connector
steel construction
powder coating
can be expanded, additionally with height elements

# RESCUE

## LiBa® Rescue

A **reusable** textile recovery system based on **LiBa®Tex** for insulating hybrid and electric vehicles during recovery.

The high-tech composite textile **LiBa®Tex** is non-flammable, prevents oxygen supply, and allows battery gases to escape, **including HF-Reduct**.

The aramid layer incorporated into the composite protects against bursting battery and vehicle parts.

In particular, this product **combines the requirements of the ArbStV** (German Occupational Safety and Health Regulation) **and a certified quarantine area**.

### LiBa® Rescue SUV



#### for dry recovery and mobile quarantine

rolled out L x W: 12300 x 5300	inner dimensions L x B x H: 5000 x 2300 x 2000
rolled up L x B x H: 1350 x 900 x 900	
net weight: 144 kg	
LiBa®Tex high-performance fabric	dry recovery system
can be dismantled into parts and expanded	modular system
HF-Reduct	

### LiBa® Rescue Bag



#### carrying case for protecting the LiBa® Rescue

HighVis yellow
carry straps
craneable
water, oil and dirt repelling

### LiBa® Rescue Cut Protection



#### for covering sharp-edged vehicle parts

4-piece cut protection set
holding magnets included
water, oil, and dirt repellent

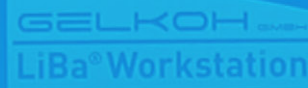
### LiBa® Rescue Covers



paint protection cover	rain cover
measurements: 5000 x 2000 x 1850	measurements: 5000 x 2000 x 850
weight: 7,2 kg	weight: 6,3 kg
delivery in storage bag	delivery in storage bag
washable at up to 30°C (86°F)	

# WORKPLACE

## LiBa® Workstation



The **LiBa® WorkStation** makes working with lithium batteries safe for users and the environment, whether in research, planning, analysis, production, or workshops. It can be customized or expanded according to your wishes, requirements, and ideas. The **LiBa® WorkStation** addresses the hazards identified in the risk analysis according to ArbStV and the Industrial Safety Regulation.

### LiBa® Workstation S



outer L x W x H: 850 x 680 x 1650	inner L x W x H: 800 x 650 x 650
net weight: 160 kg	max. gross weight: 400 kg
extinguishing solution: LiBa®Sol	activates at ca. 72 ° C
steel construction	LiBa®Vent Gasmanagement
height adjustable	mobile

### LiBa® Workstation L



outer L x W x H: 1800 x 790 x 1650	inner L x W x H: 1700 x 700 x 650
net weight: 250 kg	max. gross weight: 400 kg
extinguishing solution: LiBa®Sol	activates at ca. 72 ° C
steel construction	LiBa®Vent Gasmanagement
height adjustable	mobile

### LiBa® Workstation XL



outer L x W x H: 1800 x 1000 x 1650	inner L x W x H: 1700 x 1000 x 650
net weight: 350 kg	max. gross weight: 400 kg
extinguishing solution: LiBa®Sol	activates at ca. 72 ° C
steel construction	LiBa®Vent Gasmanagement
height adjustable	mobile

## LiBa® Cap

The **LiBa® Cap** is our safety cover for battery workstations. It effectively prevents the spread of fire caused by battery reactions, **alerts the surrounding area** visually and acoustically in the event of a fire hazard, and places the battery in a **sealed protective area**.

### LiBa® Cap



custom dimensions	
extinguishing solution: LiBa®Sol	activates at ca. 180 ° C
steel construction	LiBa®Vent Gasmanagement
automatic closure in case of an emergency	activation by smoke detector or manual activation

# WORKPLACE

## LiBa® Workstation HV



For batteries with **particularly high energy content.**

**LiBa® Workstation S HV**



outer L x W x H: 1220 x 830 x 1750	inner L x W x H: 820 x 640 x 640
net weight: 235 kg	max. gross weight: 800 kg
inner packaging in accordance with ADR	detachable from trolley
extinguishing solution: LiBa®Sol	activates at ca. 180 ° C
steel construction	LiBa®Vent Gasmanagement
stackable	craneable

**LiBa® Workstation L HV**



outer L x W x H: 1920 x 820 x 1750	inner L x W x H: 1745 x 630 x 600
net weight: 380 kg	max. gross weight: 1000 kg
inner packaging in accordance with ADR	detachable from trolley
extinguishing solution: LiBa®Sol	activates at ca. 180 ° C
steel construction	LiBa®Vent Gasmanagement
stackable	craneable

**LiBa® Workstation XL HV**



outer L x W x H: 2130 x 1110 x 1750	inner L x W x H: 1730 x 930 x 600
net weight: 480 kg	max. gross weight: 1200 kg
inner packaging in accordance with ADR	detachable from trolley
extinguishing solution: LiBa®Sol	activates at ca. 180 ° C
steel construction	LiBa®Vent Gasmanagement
stackable	craneable

Immediately ready for transport in combination with the matching LiBa® Box thanks to its modular design



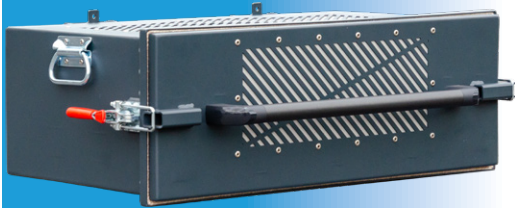
# WORKPLACE

## LiBa®Chargestation

The **LiBa®ChargeStation** enables you to **charge your power tools safely**. Compliant with ArbStättV and BetrSichV. Effectively prevents the spread of fire.

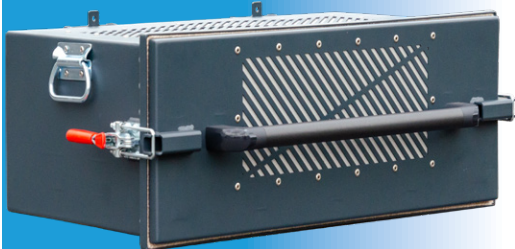
Made of steel, equipped with the **LiBa®Sol extinguishing system** and **our gas management system**, it offers space for **batteries with chargers**, **includes wall mounts**.

LiBa®Chargestation



outer L x W x H: 816 x 488 x 272	inner L x W x H: 650 x 370 x 190
net weight: 40,5 kg	
cable opening	3 outlets
extinguishing solution: LiBa®Sol	self activates at ca. 180 ° C
steel construction	LiBa®Vent Gasmanagement
inner packaging in accordance with ADR	powder coating

LiBa®Chargestation M



outer L x W x H: 816 x 488 x 332	inner L x W x H: 650 x 370 x 250
net weight: 44,8 kg	
cable opening	3 outlets
extinguishing solution: LiBa®Sol	self activates at ca. 180 ° C
steel construction	LiBa®Vent Gasmanagement
inner packaging in accordance with ADR	powder coating

LiBa®Chargestation Trolley



**Für Ihren Einsatz auf Baustellen und in Werkstätten**

dimensions L x W x H: 865 x 1100 x 1340	
net weight: 78,5 kg	
weight with 3 Chargestations: 200 kg	
weight with 3 Chargestation M: 212,9 kg	
steel construction	
mobile	powder coating

# RETURNS

## LiBa®Collect

The intelligent return system for the safe collection of damaged and old batteries.

Make your collection point for **returning old batteries** safe and **legally compliant**.

In contrast to previous practice, this system is made of **neither cardboard nor plastic** and meets the **highest requirements** in terms of structural fire protection and ADR transport.

### LiBa®Collect 120L



outer L x W x H: 544 x 497 x 1011	
net weight: 89 kg	
self-locking closure	
extinguishing solution: LiBa®Sol	activates at ca. 180 ° C
steel construction	LiBa®Vent Gasmanagement
powder coating	mobile

### LiBa®Collect Plus 120L



outer L x W x H: 900 x 650 x 553	
net weight: 89 kg	
self-locking closure	security drop slot
extinguishing solution: LiBa®Sol	activates at ca. 180 ° C
steel construction	LiBa®Vent Gasmanagement
powder coating	mobile

### LiBa®Collect 240L



<b>Auch für Feuerwehren als Quarantänebehälter einsetzbar</b>	
self-locking closure	
extinguishing solution: LiBa®Sol	activates at ca. 180 ° C
steel construction	LiBa®Vent Gasmanagement
powder coating	mobile

# ACCESSORIES

## XL+ insulation



for use in accordance with LP 906 for LiBa®Box XL+ and XLg

net weight: 46 kg

usable with LP906

## Cover XLs

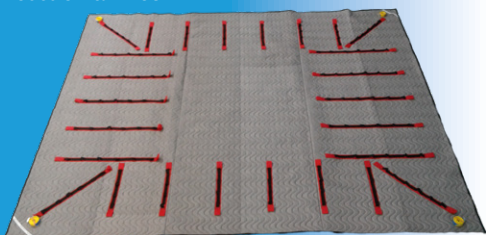


for use in accordance with LP 906 for LiBa®Box XLs

net weight: 20 kg

usable with LP906

## Rescue Blanket



for use with undefined battery sizes (e-bikes, e-scooters, etc.)

dimensions L x B: 3900 x 3300

net weight: 26,3 kg

LiBa®Tex high-performance textile

HF-Reduct

dry rescue system

includes straps

## GPS Tracker



enables reliable temperature monitoring to prevent fires at an early stage

wireless remote monitoring

unlimited range

pre-configured

precise measurements

Robust and weather-resistant

## Crowbars



for moving and dismantling defective high-voltage systems

High-voltage insulated

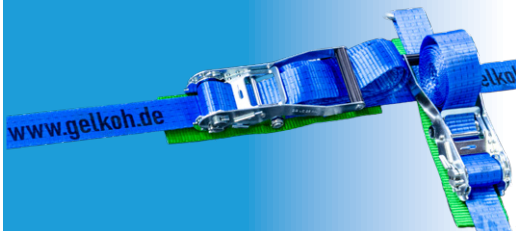
lever head adjustable as required

telescopic

available in 3 different sizes

# ACCESSORIES

## Ratchet Straps



- highest resistance of fittings to corrosion and acids
- poor electrical conductivity and thermal conductivity
- traction force: 2000 daN
- temperature resistance: -40 - 100 ° C

## Rain Cover



- measurements: product-related
- PVC/PES fabric
- includes logo, Class 9a sign, and document pocket
- eyelets all around and fastening cord
- reinforcements in the upper corners
- contour markings on the outside corners
- waterproof

## Plug-In Wheel Set



- dimensions: product-specific
- wheels can be steered and locked in place
- galvanized steel plug with polyurethane wheel and ball bearing
- also available separately
- compatible with LiBa®Box and LiBa®Safe

## Fire Protection Cushion



- | small fire protection cushion | large fire protection cushion |
|-------------------------------|-------------------------------|
| dimensions: 200 x 250 x 60    | dimensions: 400 x 500 x 60    |
| weight: 0,15 kg               | weight: 0,7 kg                |
| fire proof up to ca. 1200 ° C |                               |
| simple and dust-free use      |                               |
| reusable                      |                               |
| flexible                      |                               |

## Magnetschilder



- | damaged battery / disposal | class 9               | UN-code              |
|----------------------------|-----------------------|----------------------|
| dimensions: 200 x 140      | dimensions: 100 x 100 | dimensions: 55 x 155 |
| material: 3000g/qm         |                       |                      |
| magnetic                   |                       |                      |
| robust                     |                       |                      |
| in accordance with ADR     |                       |                      |
| reusable                   |                       |                      |

## Kabeldurchführung



- |                                |                         |
|--------------------------------|-------------------------|
| outer L x W x H: 234 x 93 x 42 | opening L x W: 187 x 71 |
| net weight: 1,7 kg             |                         |
| cable diameter: 3,5 - 32,5 mm  |                         |
| available in 4 configurations: |                         |
| CF16/4                         | CF16/10                 |
| CF16/16                        | CF16/19                 |

# GELKOH GMBH

Patented - Awarded - Certified  
Sales and Service Worldwide

Geinegge 23 | D-59075 Hamm

Telefon: +49 (0) 2381 88 88 38 1

Telefax: +49 (0) 2381 88 88 38 3

E-Mail: [info@gelkoh.de](mailto:info@gelkoh.de)

[www.gelkoh.com](http://www.gelkoh.com)



Your retailer